





9.30 AM - 12.00 PM

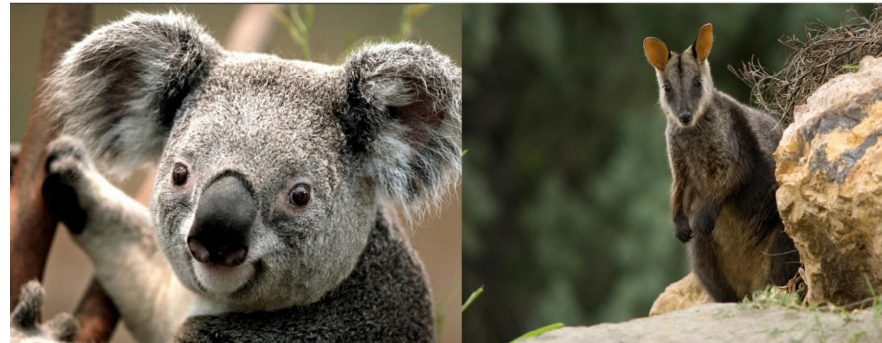
LITTLE LIVERPOOL INITIATIVE

HIDDEN VALE, GRANDCHESTER



The Little Liverpool Range is a 'best kept secret' of SEQ, often considered as a little brother in comparison to the Main and Teviot Ranges nearby. Home to many amazing fauna species such as the Brush-tailed Rock Wallaby and Eastern Bristle Bird; the Little Liverpool Range offers an opportunity for landholders to work together in the protection and management of these species and their habitats.

Join us for a morning workshop to hear about the many conservation initiatives already underway within the area, and to discuss opportunities for partnerships in threat management and species recovery.



WORKSHOP PRESENTATIONS

- ✓ **'What's Happening' at Hidden Vale**
Ben O'Hara
- ✓ **'What's Happening' at Queensland Trust for Nature**
Tanya Pritchard
- ✓ **Conservation Partnerships with Ipswich City Council**
Stephani Grove
- ✓ **Iconic Species Programs**
Tim Shields
- ✓ **Species Recovery and Research Centre**
Assoc Prof Peter Murray and Andrew Tribe
- ✓ **FACILITATED DISCUSSION - establishing the Little Liverpool Initiative**
Ben O'Hara and Kaye Cavanagh

RSVP:
19 July 2016

Stephani Grove
Programs Officer
(Natural Resources)
Ipswich City Council

3810 7173
0498 884 011



STAY AND JOIN US
FOR LUNCH AND
NETWORKING
12PM - 1PM

Kindly provided by Spicers Hidden Vale

Little Liverpool Initiative

- Welcome and 'Whats Happening' at Hidden Vale
Ben O'Hara
- 'Whats Happening' at Queensland Trust for Nature
Tanya Pritchard
- Conservation Partnerships with Ipswich City Council
Stephani Grove
- Iconic Species Programs
Tim Shields
- Species Recovery and Research Centre
Assoc Prof Peter Murray and Dr Andrew Tribe
- Healthy Waterways and Catchments
Liz Gould
- FACILITATED DISCUSSION – establishing the Little Liverpool Initiative
Kay Cavanagh

Little Liverpool Initiative

- Welcome and 'Whats Happening' at Hidden Vale
Ben O'Hara
- 'Whats Happening' at Queensland Trust for Nature
Tanya Pritchard
- Conservation Partnerships with Ipswich City Council
Stephani Grove
- Iconic Species Programs
Tim Shields
- Species Recovery and Research Centre
Assoc Prof Peter Murray and Dr Andrew Tribe
- Healthy Waterways and Catchments
Liz Gould
- FACILITATED DISCUSSION – establishing the Little Liverpool Initiative
Kay Cavanagh

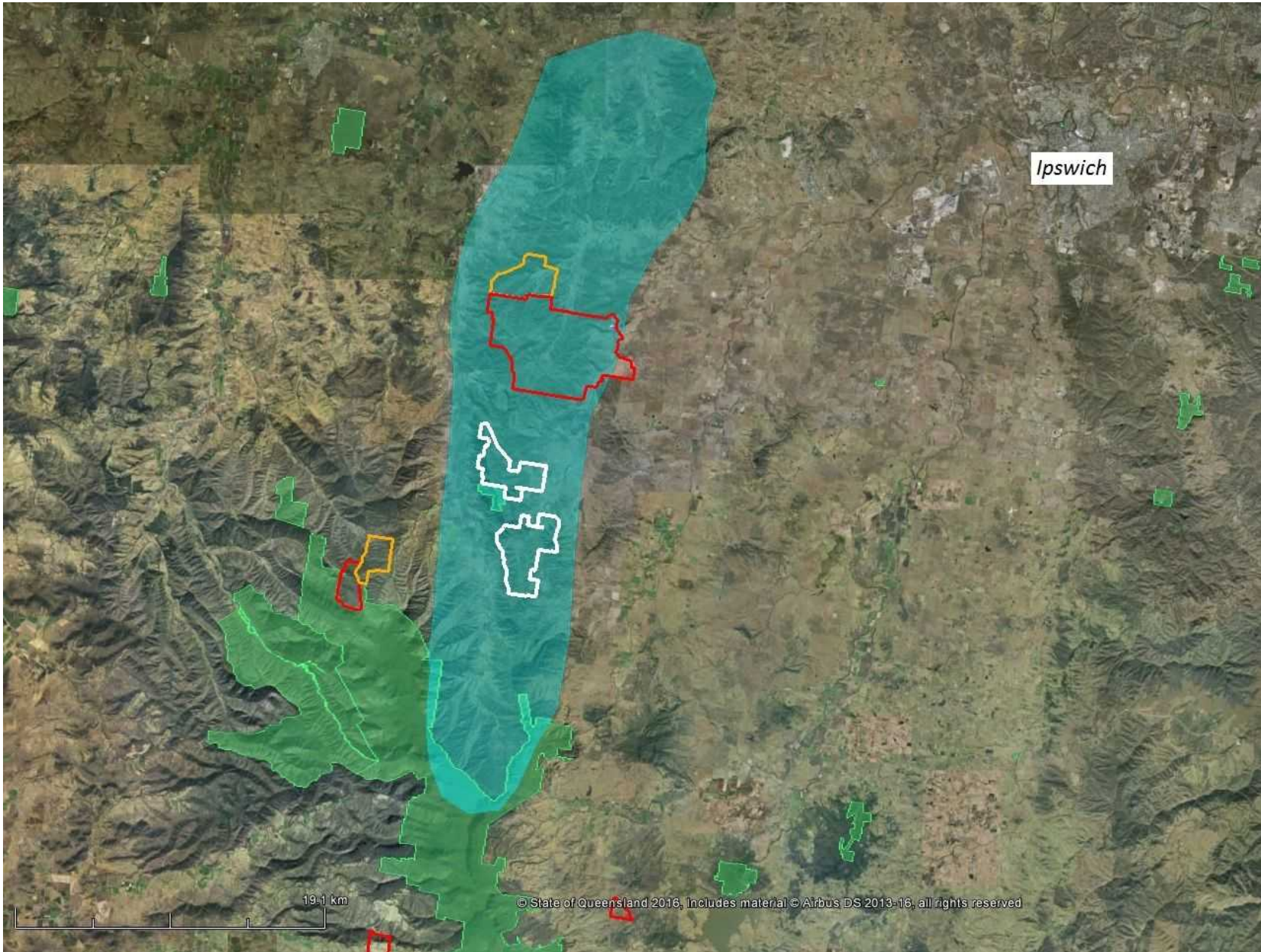
Why are we here?

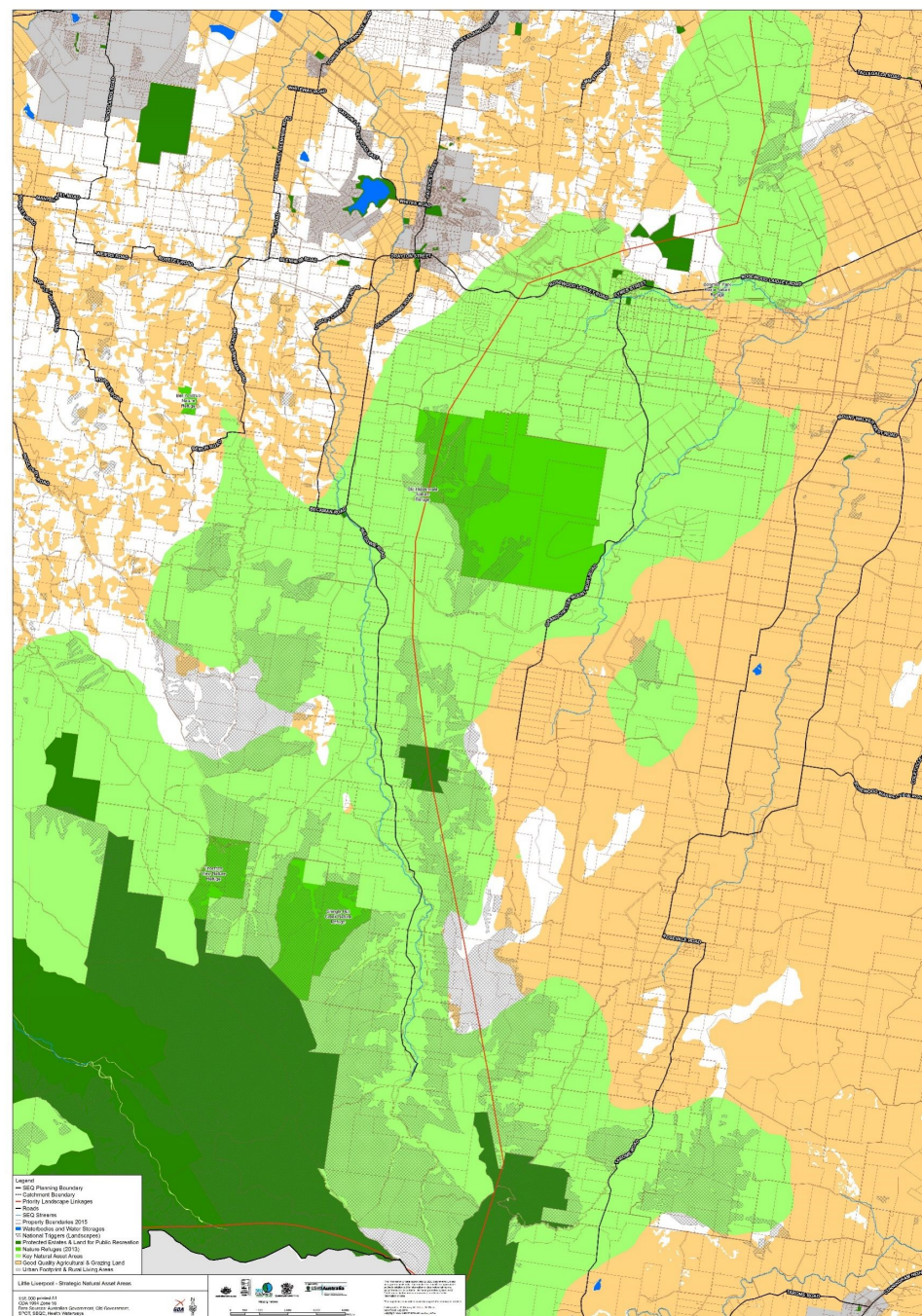
- Information session
- Talk about establishing an integrated management regime across the Little Liverpool Range

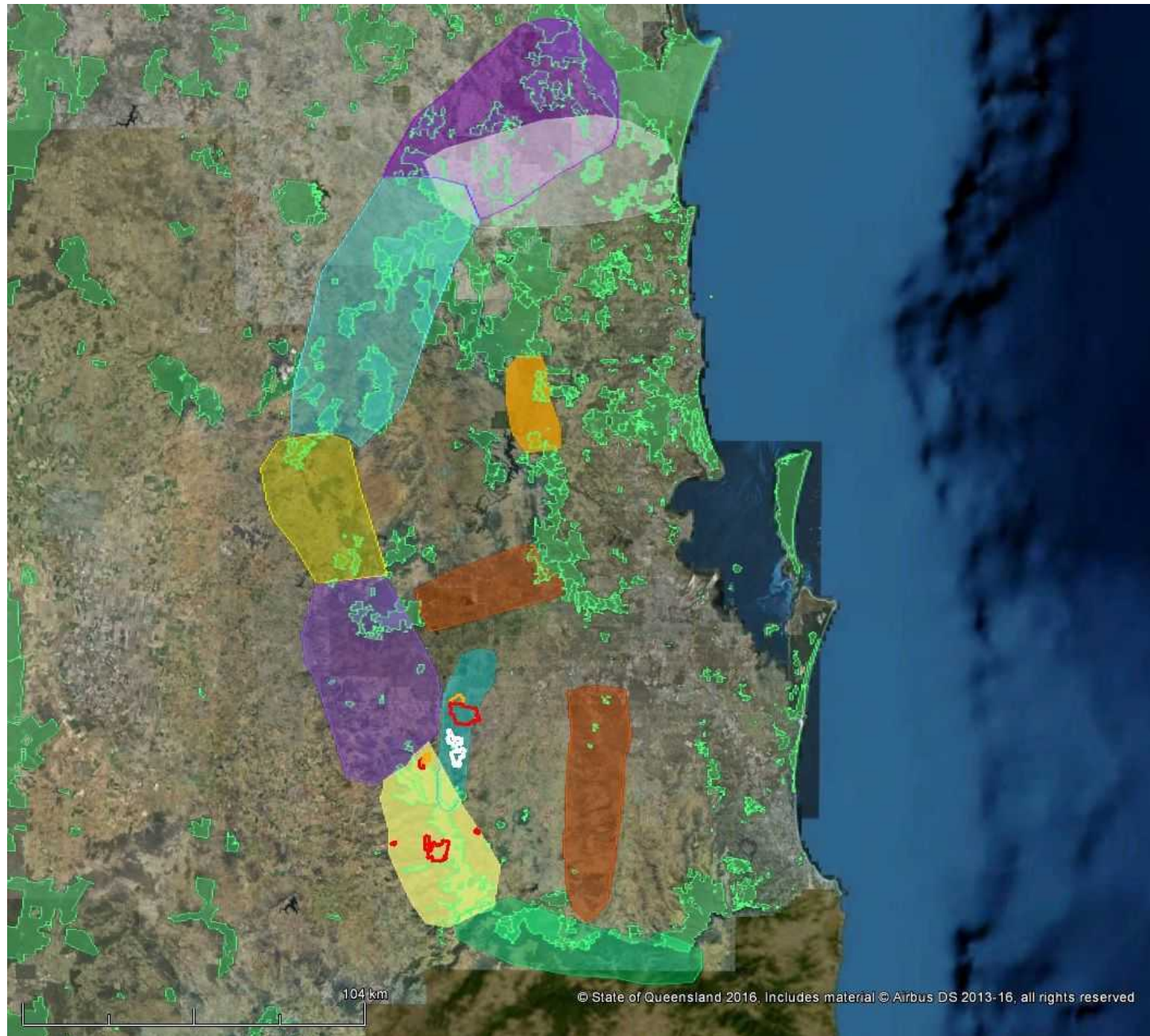
Challenges

- Habitat Loss
- Managing Invasive Species
- Over Grazing
- Unsustainable Practices
- Population Growth
- Climate Change
- Altered Fire Regimes
- Altered Hydrology

Will connectivity exacerbate the spread of weeds, pest species, diseases or catastrophic events (such as fire or floods)?







[HOME](#)
[About Us](#)
[Nature's palette](#)
[How we work](#)
[Achieving the vision](#)
[Our Blog](#)
[Resources](#)
[How you can help](#)
[Donate](#)

[HOME](#)
[Contact Us](#)

[Go](#)

Welcome to gondwana link

South-western Australia is an amazing place. It is one of the world's top 35 biodiversity hotspots, places "where exceptional concentrations of endemic species are undergoing exceptional loss of habitat".

Gondwana Link is our best chance to achieve reconnected, healthy and resilient country across south-western Australia. It builds on many decades of conservation work. We have a 1000+ year old living link that reacts to change.

- restoring ecological connectivity westcorner;
- protecting and restoring biodiversity;
- building a living link that reacts to change.

Our vision is both audacious and achievable.

Category Winner

Land

The Just

achieve

Copyright © 2014 GondwanaLink
Last Updated March 24, 2015

Site designed by Strike Point and Powered by

connecting restoring protecting the Sunshine Coast Hinterland

[Home](#)
[About Us](#)
[Research & Information](#)
[Projects](#)
[Managing Your Place](#)
[News and Events](#)
[Contact Us](#)
[Get Involved](#)

[Login](#)
[Register](#)

[Search](#)

K2C

- Targets
- Projects
 - Myer - K2C Grasslands
 - Landscape Links for Small Bush Birds
 - Archive
 - Properties
 - People

male of the Sunshine who have been

landscape: a place to restore the Hinterland in rd villages. In part it is

very suitable. This can help and gardens of our fered plants and

it cleared. Noxious feds. We know that many

Latest Project

Subsidiary of Forests Ecology Course 2016

27 - 30 Aug 2016. This is the longest year of this online course. JAN on 27

[Find out more](#)

Research & Information

What's Happening: Unpublished PIRRA and Socialists.

אנו מודים לך על שיתוף הפעולה שלך

אנו מודים לך על שיתוף הפעולה שלך

אנו מודים לך על שיתוף הפעולה שלך

saving the Berry Rainforest

Regent Honeyeater Restoration Project

KZW BioBlitzers set to hit the ground running

Slopes2Summit "Bats on the Billabong" night

About Us

The Great Eastern Ranges Initiative is bringing people and organisations together to protect, link and restore healthy habitats over 3,600 kilometres from Western Victoria through NSW and the ACT to Far North Queensland. The initiative is a strategic response to mitigate the potential impacts of climate change, invasive species, land clearing and other environmental changes on our richest biodiversity and iconic landscapes.

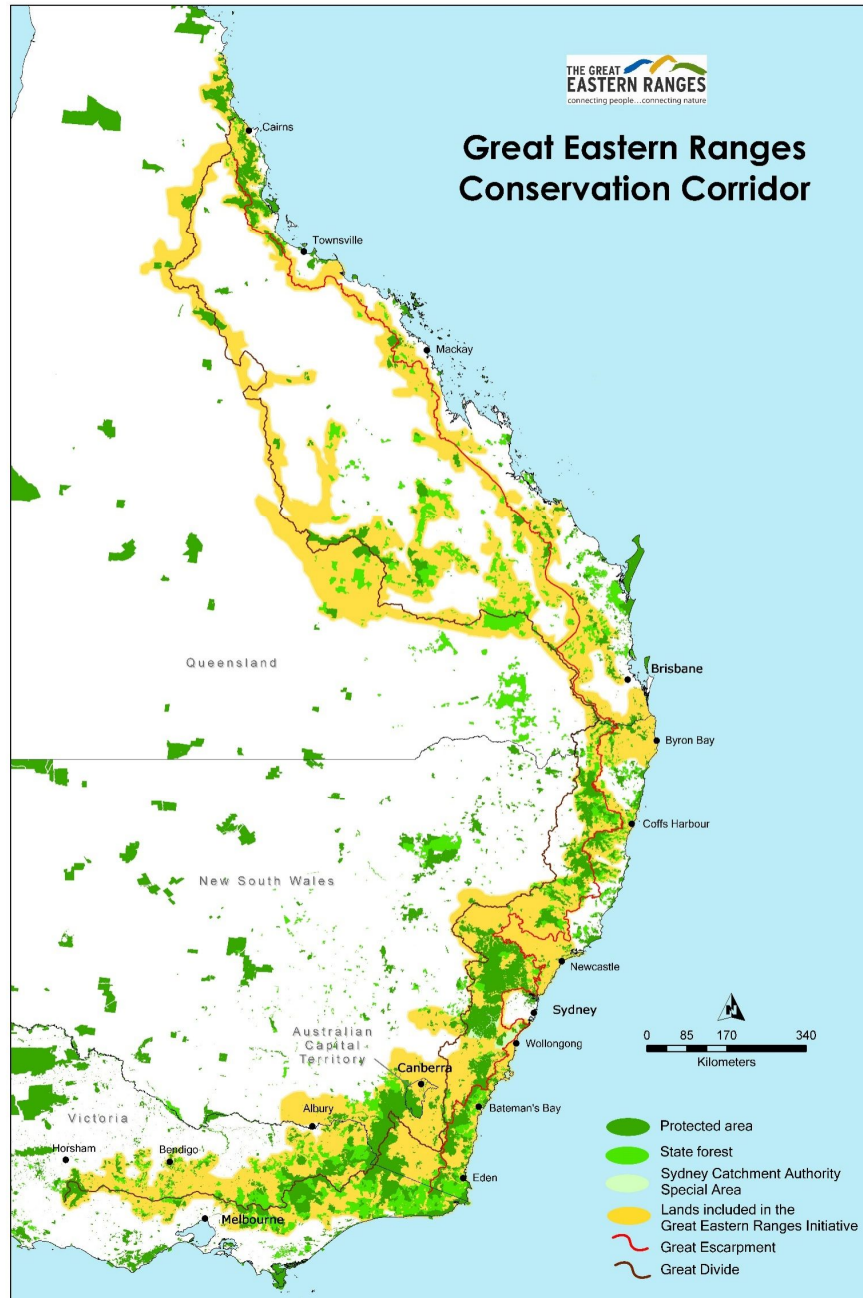
About the Great Eastern Ranges Initiative

How we link and restore habitat

About the Ranges of eastern Australia

Iconic species of the Ranges

Great Eastern Ranges Conservation Corridor



Great Eastern Ranges

Goals

The GER Vision is supported by four primary goals, which provide a framework for all GER plans and are used as a measure of the initiative's success.

Goal 1: Connect landscapes and ecosystems

Improve the connectivity, condition and resilience of landscapes and habitats, and achieve an associated halt to further decline and loss of species

Goal 2: Link people and landscapes

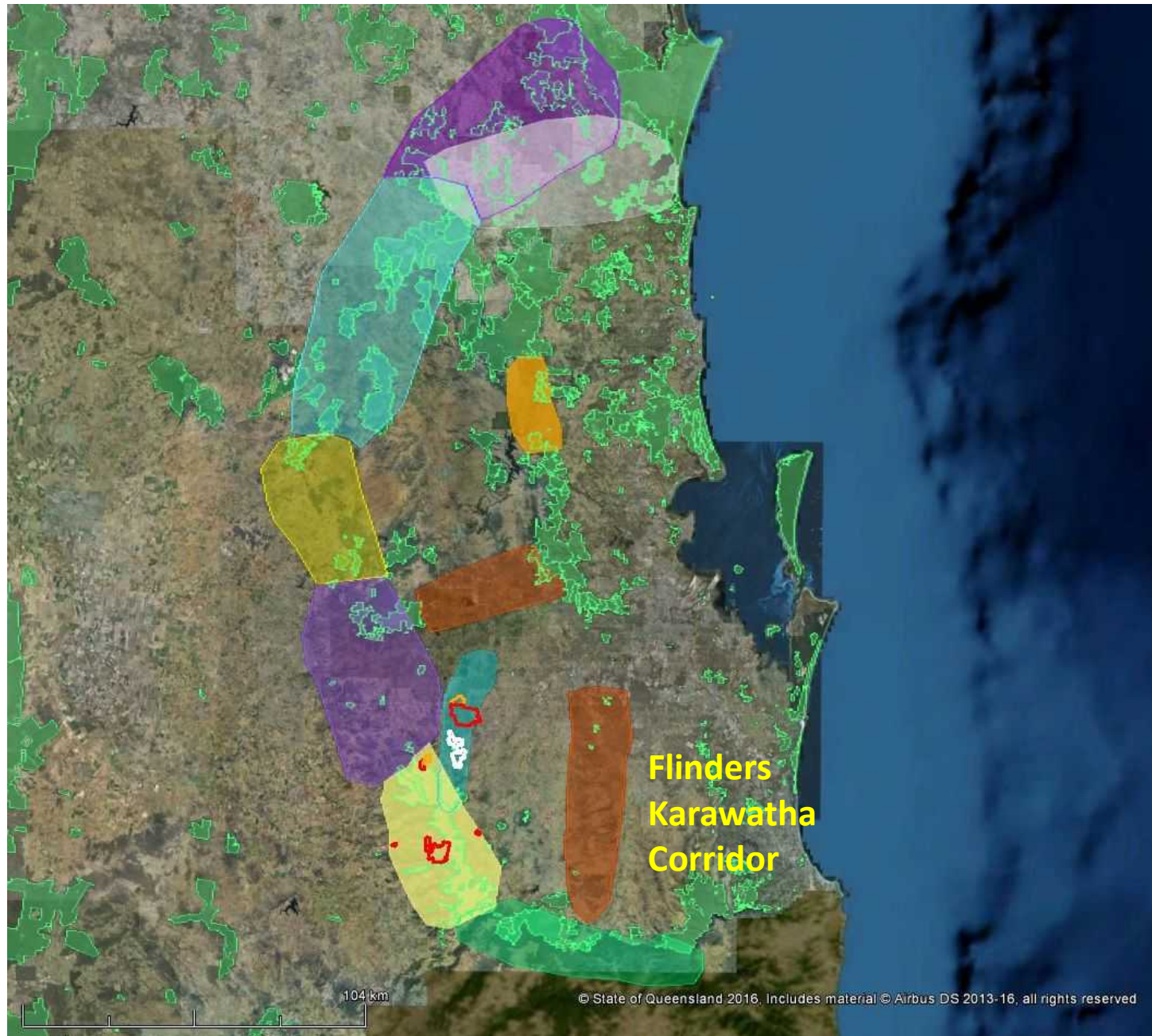
Increase the number of people working together in locally organised and managed regional partnerships to improve the connectedness and resilience of landscapes

Goal 3: Communicate effectively

Improve the transfer of knowledge, skills and practises through community engagement, involvement and education

Goal 4: Apply knowledge

Improve our understanding of species, ecosystems and local landscapes in the context of the wider GER, and their requirements for long term persistence





Disclaimer

This document has been prepared with all due diligence and care, based on the best available information at the time of publication. The Queensland Government holds no responsibility for any errors or omissions within this document. Any decisions made by other parties based on this document are solely the responsibility of those parties.

If you need to access this document in a language other than English, please call the Translating and Interpreting Service (TIS National) on 131 450 and ask them to telephone Library Services on +61 7 3170 5470.

This publication can be made available in an alternative format (e.g. large print or audiotape) on request for people with vision impairment; phone +61 7 3170 5470 or email library@ehp.qld.gov.au

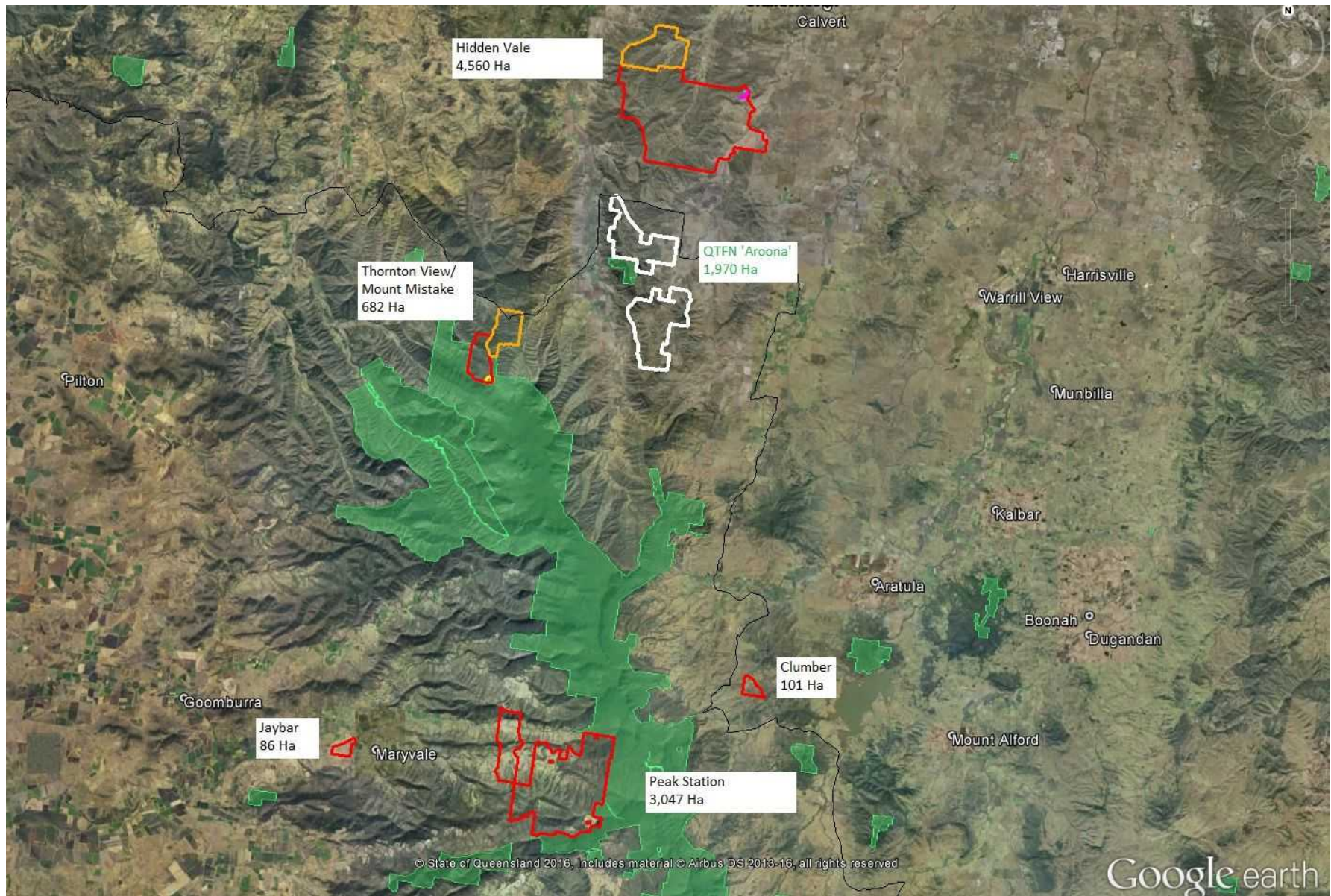
For more information about this strategy please email Esres.Southernesbranch@ehp.qld.gov.au.

Prepared February 2014

#30390

Official Partners





A good start for scale

| | |
|-----------|----------|
| Gainsdale | 5,242 Ha |
|-----------|----------|

| | |
|------|----------|
| QTFN | 1,970 Ha |
|------|----------|

| | |
|--|--------|
| ICC (Mt Beau Brummel Conservation Park) | 155 Ha |
|--|--------|

7,367 Ha

Hiddenvale – a Brief History

- 1829 – Alan Cunningham first Europeans
- 1841 – first European Settler, James Phelps Robinson

James Phelps
Robinson

- 1841
- Property Called Franklyn Vale

Henry and
Maria Mort

- 1849
- 155,000 Ha's, 13,000 Sheep

Philip Jost

- 1871
- Property renamed 'Jost Vale'
- Property reduced to 4,000 Ha's after resumption by the newly formed Qld State Government

A.J. Cotton

- 1900
- Property named Hidden Vale

Day Family

- 1929
- Property renamed 'Sutton Royal'

Murdo
Mackenzie

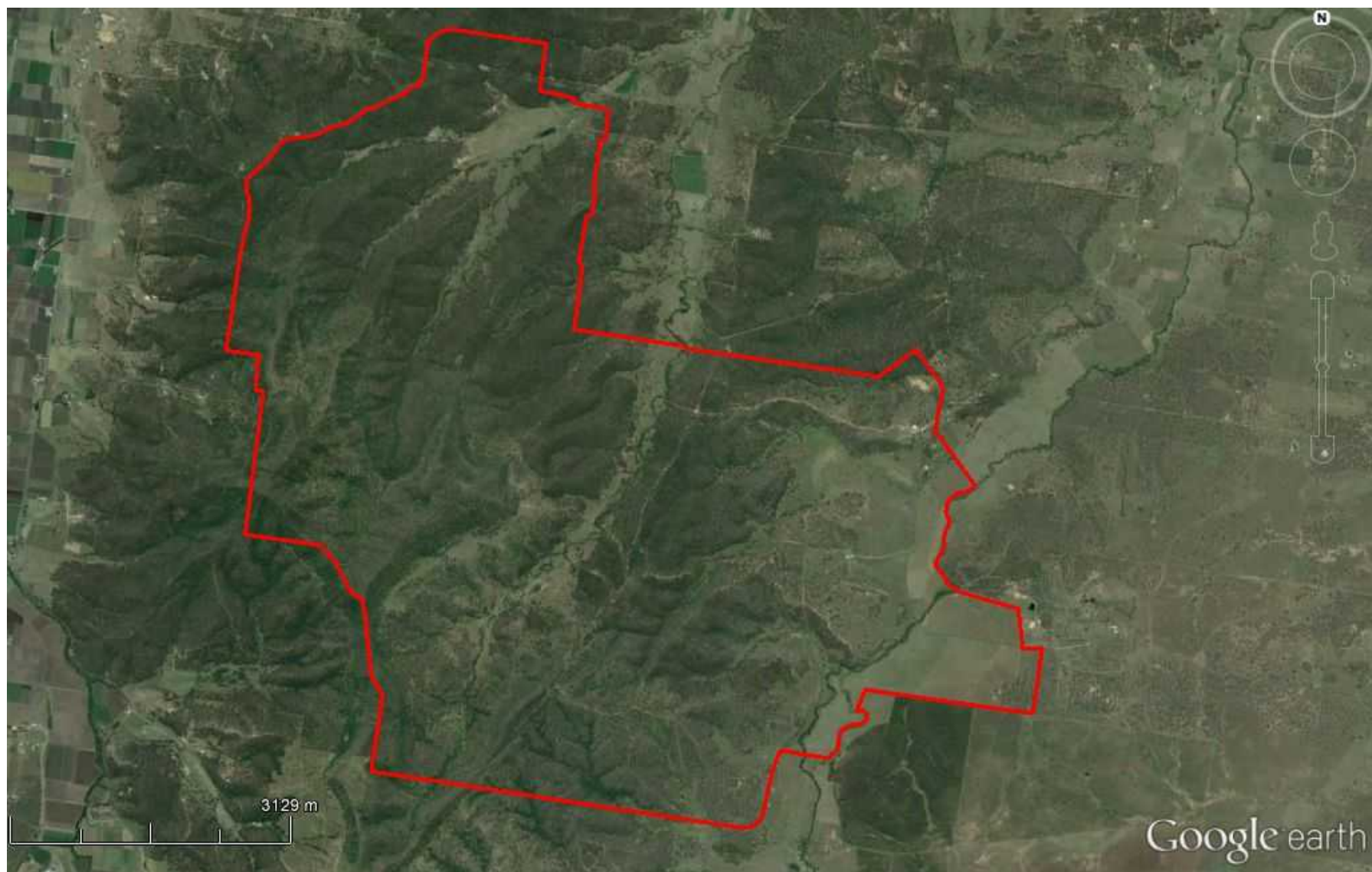
- 1929
- Property renamed 'Old Hidden Vale' and was 3,000 Ha's
- Mackenzie died in 1957 and his sisters sold part of the property in 1964. Margaret Crombie held the balance which included Old Hidden Vale.

Cole Family

- Acquired Old Hidden Vale in 1992 and acquired additional parcels of land over time taking the property back to about the same size as when it was Jost Vale

Turner Family

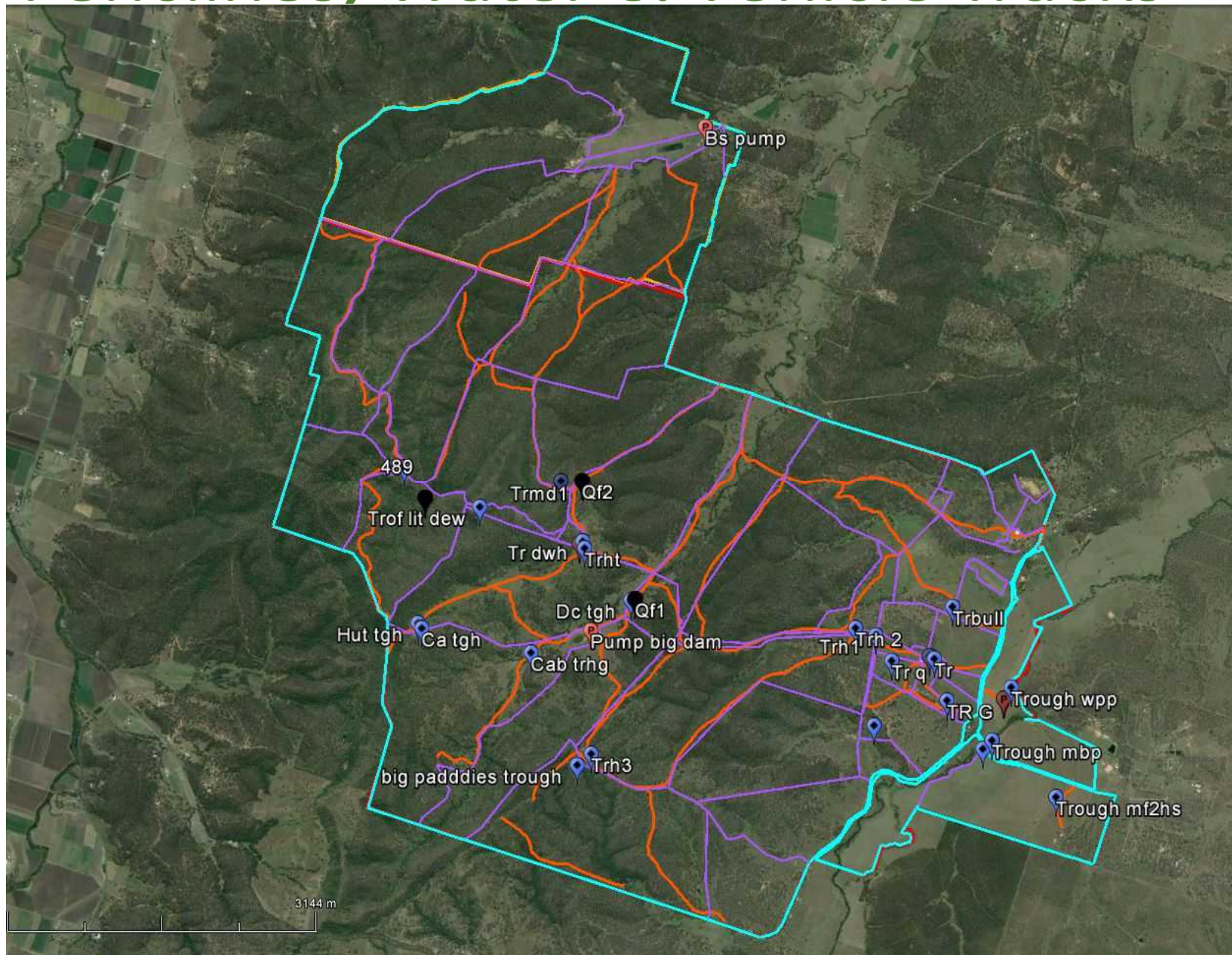
- Acquired Old Hidden Vale from the Cole family towards the end of 1999



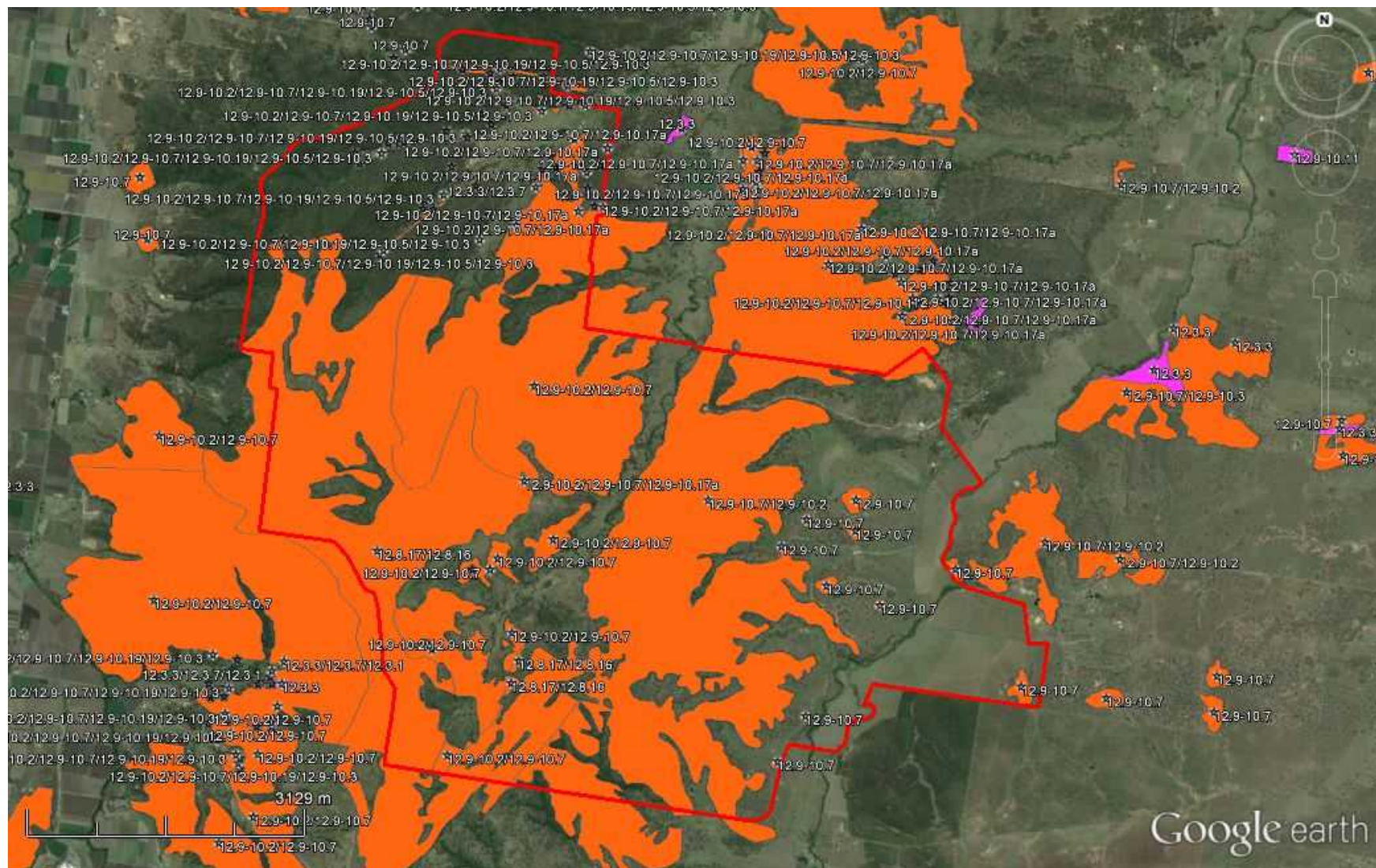
Hiddenvale Today

- A working cattle property of over 400 head
- A 31 Room luxury resort
- A series of Mountain bike trails – over 150 kms
- A bush walking eco tourism operation
- A new wildlife breeding facility
- Commitment to ecological restoration

Fenclines, Water & Vehicle Tracks







Some of our wildlife

- Koalas,
- Glossy Black Cockatoos,
- Pale Headed Rosella's,
- Rainbow Lorikeets,
- Powerful Owls,
- Redd necked wallaby,
- Brush tailed rock wallaby,
- Common brushtail possum,
- Common brushtail possum,
- Greater glider,
- Sugar glider,
- Brush tailed phascogale
- Long nosed bandicoot
- Yellow-footed antechinus
- Tusked Frog
- Red bellied black snake
- Yellow faced whip snake
- Lesueur's tree frog

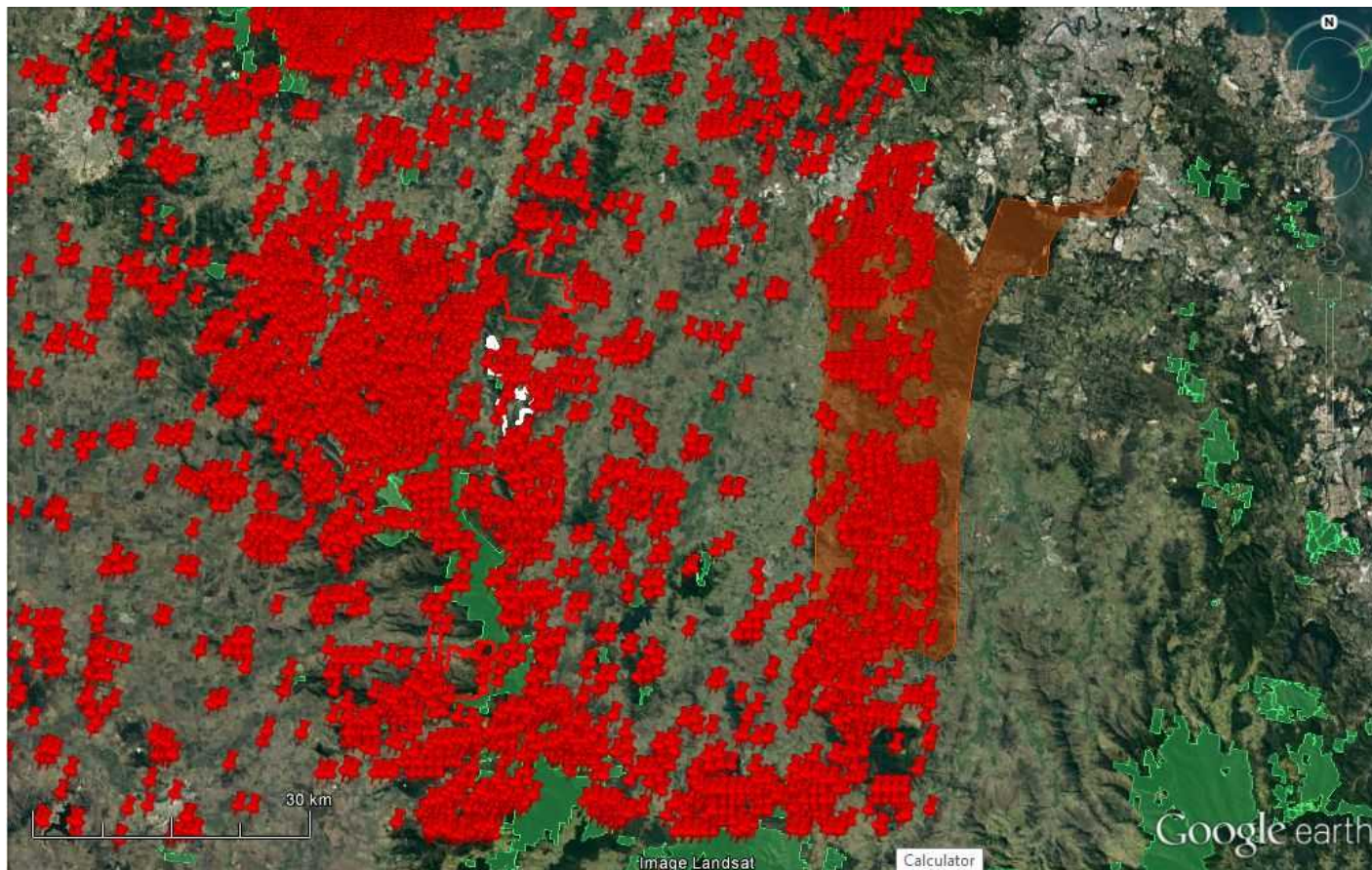
Some of our possible wildlife

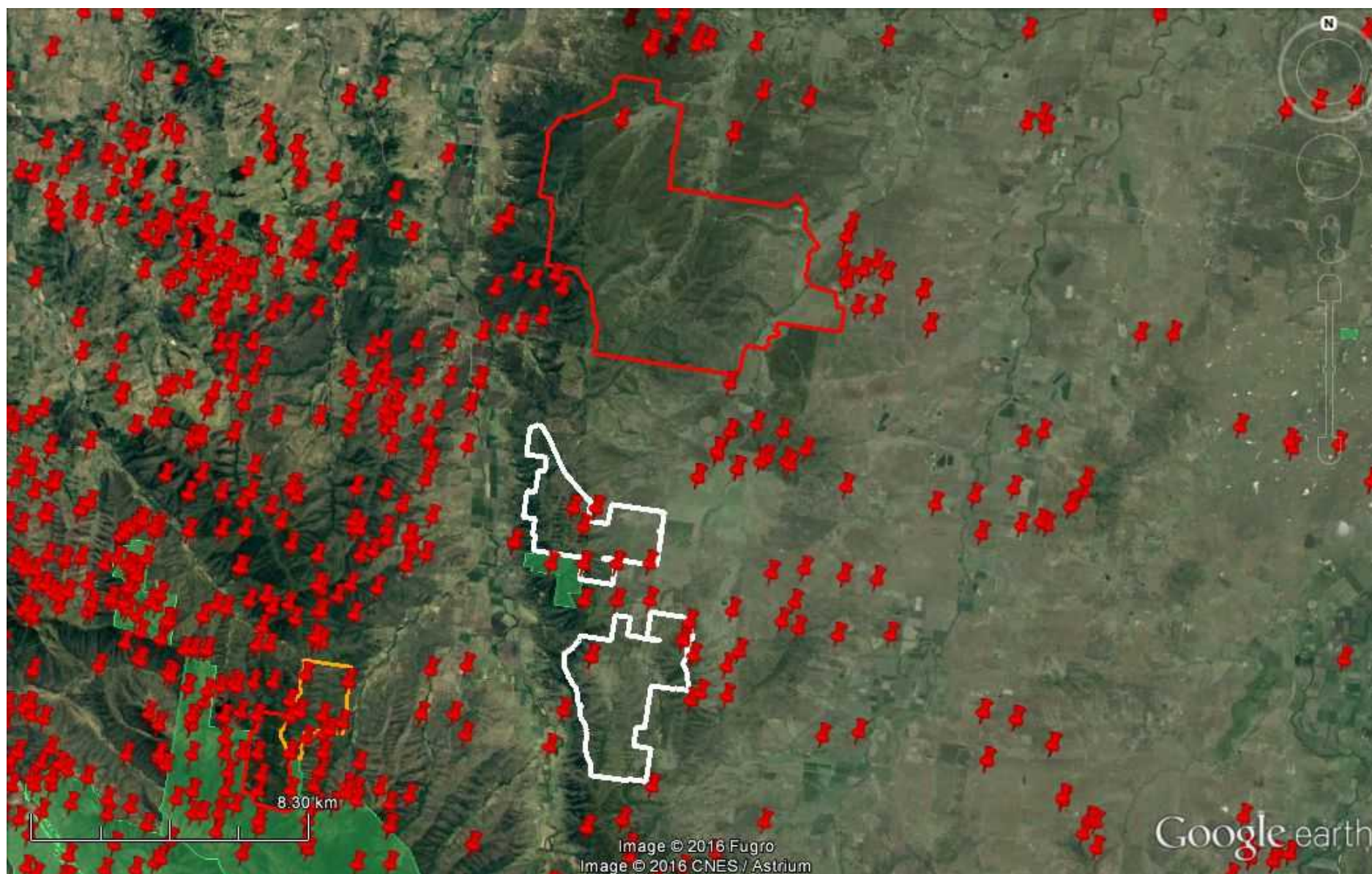
- Eastern bristlebird
- Spotted quoll
- ??

Management Challenges

- Fire
- Ferals
- Weeds

Fires: 2002-2015

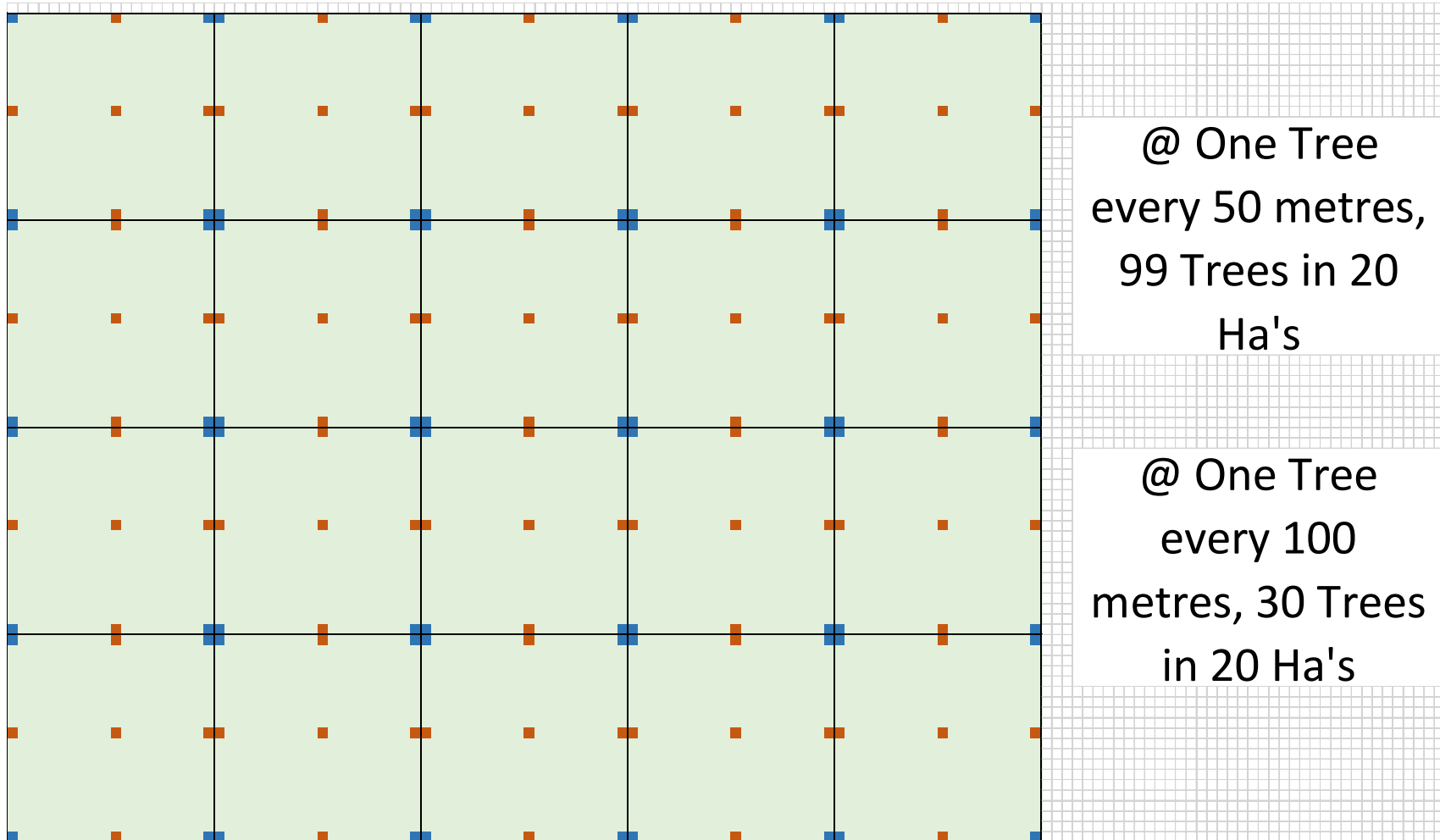




Restoration



Plantings in Paddocks



Little Liverpool Initiative

- Welcome and 'Whats Happening' at Hidden Vale
Ben O'Hara
- 'Whats Happening' at Queensland Trust for Nature
Tanya Pritchard
- Conservation Partnerships with Ipswich City Council
Stephani Grove
- Iconic Species Programs
Tim Shields
- Species Recovery and Research Centre
Assoc Prof Peter Murray and Dr Andrew Tribe
- Healthy Waterways and Catchments
Liz Gould
- FACILITATED DISCUSSION – establishing the Little Liverpool Initiative
Kay Cavanagh

Little Liverpool Initiative

- Welcome and 'Whats Happening' at Hidden Vale
Ben O'Hara
- 'Whats Happening' at Queensland Trust for Nature
Tanya Pritchard
- **Conservation Partnerships with Ipswich City Council**
Stephani Grove
- Iconic Species Programs
Tim Shields
- Species Recovery and Research Centre
Assoc Prof Peter Murray and Dr Andrew Tribe
- Healthy Waterways and Catchments
Liz Gould
- FACILITATED DISCUSSION – establishing the Little Liverpool Initiative
Kay Cavanagh

Little Liverpool Initiative

- Welcome and 'Whats Happening' at Hidden Vale
Ben O'Hara
- 'Whats Happening' at Queensland Trust for Nature
Tanya Pritchard
- Conservation Partnerships with Ipswich City Council
Stephani Grove
- **Iconic Species Programs**
Tim Shields
- Species Recovery and Research Centre
Assoc Prof Peter Murray and Dr Andrew Tribe
- Healthy Waterways and Catchments
Liz Gould
- FACILITATED DISCUSSION – establishing the Little Liverpool Initiative
Kay Cavanagh

Little Liverpool Initiative

- Welcome and 'Whats Happening' at Hidden Vale
Ben O'Hara
- 'Whats Happening' at Queensland Trust for Nature
Tanya Pritchard
- Conservation Partnerships with Ipswich City Council
Stephani Grove
- Iconic Species Programs
Tim Shields
- **Species Recovery and Research Centre**
Assoc Prof Peter Murray and Dr Andrew Tribe
- Healthy Waterways and Catchments
Liz Gould
- FACILITATED DISCUSSION – establishing the Little Liverpool Initiative
Kay Cavanagh

Little Liverpool Initiative

- Welcome and 'Whats Happening' at Hidden Vale
Ben O'Hara
- 'Whats Happening' at Queensland Trust for Nature
Tanya Pritchard
- Conservation Partnerships with Ipswich City Council
Stephani Grove
- Iconic Species Programs
Tim Shields
- Species Recovery and Research Centre
Assoc Prof Peter Murray and Dr Andrew Tribe
- **Healthy Waterways and Catchments**
Liz Gould
- FACILITATED DISCUSSION – establishing the Little Liverpool Initiative
Kay Cavanagh

Little Liverpool Initiative

- Welcome and 'Whats Happening' at Hidden Vale
Ben O'Hara
- 'Whats Happening' at Queensland Trust for Nature
Tanya Pritchard
- Conservation Partnerships with Ipswich City Council
Stephani Grove
- Iconic Species Programs
Tim Shields
- Species Recovery and Research Centre
Assoc Prof Peter Murray and Dr Andrew Tribe
- Healthy Waterways and Catchments
Liz Gould
- **FACILITATED DISCUSSION – establishing the Little Liverpool Initiative**
Kay Cavanagh